

INSIDE GOLF™ NEWSPAPER

Pacific NW professional Jeff Coston qualifies for 2015 Champions Tour

Jeff Coston, the director of instruction at Semiahmoo Resort in Blaine, qualified for full-time status for the 2015 Champions Tour by finishing tied for third at the Qualifying School in Florida. Coston had provisional status in 2014 but will have full-time status for 2015. The Champions Tour starts up in Hawaii with the season's first event in January.



WHAT'S NEW IN NW GOLF

AimPoint might be your answer for putting woes

Been having trouble on the putting green? Then it might be time to turn to AimPoint, a putting system that has helped many golfers improve their putting, including professionals PGA Tour star Adam Scott and LPGA star Stacy Lewis.

AimPoint is a system that helps read the greens and allows golfers to make more putts. See Page 15 for more.

Riverbend offers some unique 'Doppler' deals

Riverbend Golf Course in Kent has gone to the weather radar to help give Pacific Northwest golfers some good deals during the winter months.

Riverbend, one of the Northwest's busiest golf courses, is offering Doppler Deals which will have different green fees depending on the weather. The nastier the weather Mother Nature throws at golfer, the more inexpensive the golf. If there is no rain in the forecast, then the rates stay the same as the posted rates at the course.

Moore wins in Malaysia; Taylor wins first event

There must be something about playing in Malaysia that gets Ryan Moore going. The Puyallup native won the CIMB Classic for the second straight year in Kuala Lumpur, giving him his fourth career PGA Tour championship.

Moore finished the final round with a 5-under 67 and won the tournament by three shots over Gary Woodland, Sergio Garcia and Kevin Na. Interestingly, Moore beat Woodland in a playoff to win this same tournament in 2013.

Moore won a first-place check of \$1,260,000 for winning the tournament along with 500 FedEx Cup points. A nice start to the 2014-15 season.

But Moore wasn't the only Pacific Northwest professional to have some early season success.

Former University of Washington golfer Nick Taylor from Winnipeg won the Sanderson Farms Championship after coming from four shots behind.

Taylor was the top-ranked amateur in the world for five years and nearly did not make it to the PGA Tour this year but a big finish at the Web.com Tour Championship got him his PGA Tour card.

Rules Quiz

While playing the third hole a player makes a stroke from a bunker and incredibly the ball comes to rest against the flagstick. Now what? Please see Page 2 of Inside Golf for the answer.

Troon Golf: Warm-weather golf getaways



Pacific Northwest golfers are always on the lookout for a winter getaway. Troon Golf just might have what you are looking for if you are looking for a winter escape from Mother Nature in the Pacific Northwest. From places like Kapalua's Plantation Course on Maui (top photo) to Ocotillo Golf Club in Arizona (right), Troon Golf has plenty to offer in a variety of warm-weather states. Take a look inside this section of Inside Golf for a look at Troon Golf and some vacation choices.



PNGA crowns its Players of the Year for the 2014 season

The Pacific Northwest Golf Association (PNGA) has announced the Players of the Year for the 2014 championship season. The remarkable collection of recipients includes Adam Svensson of Surrey, B.C. in the Men's category; Gigi Stoll of Beaverton, Ore. in the Women's category; Kevin Carrigan of Victoria, B.C. in the Men's Mid-Amateur category; Christina Proteau of Port Alberni, B.C. in the Women's Mid-Amateur category; Tom Brandes of Bellevue, Wash. in the Senior Men's category; Kareen Markle of Meridian, Idaho in the Senior Women's category; Graysen Huff of Eagle, Idaho in the Junior Boys' category; and Naomi Ko of Victoria B.C. in the Junior Girls' category.

Svensson put together an impressive and consistent championship record in 2014. As a junior at Barry University in Florida, Svensson won seven of the 12 NCAA Division II events he competed in, a record that earned him the Jack Nicklaus Award for best Division II golfer in the nation. He finished T8 in the Canadian Amateur Championship, and T4 in the BC Amateur Championship. Svensson competed in the World Amateur Team Championships, where he took 7th place individually, and 2nd in the team competition.

Stoll put together an incredible season in both the junior and amateur ranks. She was crowned champion in the OGA Women's Champion of Champions, the Oregon Women's Amateur Championship, and the Oregon Junior Amateur Championship. Stoll was runner-up in the Oregon Women's Stroke Play Championship after losing in a playoff, and made it to the Round of 16 in the U.S. Girls' Junior Amateur Championship. Despite winning three amateur events in Oregon in 2014, Stoll's greatest accomplishment may have come when she not only qualified for, but then made the cut in the LPGA Portland Classic, finishing 52nd in the professional event.

This is Carrigan's third consecutive PNGA Men's Mid-Amateur Player of the Year honor. Carrigan had several top finishes in big events in 2014. He placed T6 in the Canadian Mid-Amateur Championship, T7 in the BC Amateur Championship, and T10 in the Sahalee Players

See Players of the Year, Page 4

Jackson Park opens new range this month

If you are a regular at Jackson Park Golf Course and could never find a way to warm up before your round... that will soon change! Jackson Park Golf Course, located just north of downtown Seattle, will celebrate the grand opening of its new range in December. The new two-tiered, 50-stall, covered and lit driving range was built on the site of the original hole number 10. In late 2012 and early 2013, the course made some changes to its existing layout in order to make this a reality. Premier Golf, which manages Jackson Park, also has plans for many of its other properties, including a new clubhouse at Jefferson Park Golf Course and a new driving range at Bellevue Golf Course.



Paige Mackenzie finds out what life is like in front of the camera

I went out to the mailbox one day and grabbed my weekly copy of *GolfWeek Magazine*. Before I started to thumb through it I took a look at the cover. I did a double take. But there she was on the cover - Paige Mackenzie. As I looked at the cover some more, I remember this was the same Paige Mackenzie who I did stories on when she played high school golf in Yakima. More stories when she was a college All-American at Washington. And even more when she turned professional and played on the PGA Tour.

But this picture was a new Paige Mackenzie, the television version.

I knew that Paige was becoming a regular on the Golf Channel. She had been helping to host the Morning Drive show and working with the Golf Academy shows as well. And she is even co-hosting the Big Break Myrtle Beach Show.

I knew she was getting big time. And the cover of this *GolfWeek* just proved it.

It's always great to see the Pacific Northwest golfers get any kind of attention, whether it's on the golf course or in front of the camera. For now, Mackenzie will take her attention in front of the Golf Channel cameras. And she does a terrific job. Paige comes across on camera as a player who knows of what they speak whether it's talking about the LPGA or the PGA.

She looks comfortable in front of the camera, but that's just not where she wants to be the rest of her career.

She has missed the last year because of back problems and last February she underwent a microdiscectomy in which doctors harvested her bone marrow, pulled out stem cells and re-injected them into some disks in her ailing back.

She is hoping to play the entire 2015 season pain-free. Paige will get a season



long calendar of events to play in because of her using the major medical exemption. The 31-year-old Paige hopes the work done on her back will allow her to see the top of some leaderboards during the 2015 season.

Her first full season on the LPGA Tour was in 2007 when she played in 19 events and made nine cuts. Her best finish with a tie for 17th and she made \$49,104 that year. Her best season on the LPGA Tour was in 2011 when she made \$184,384 finishing 47th on the money list but she slumped in 2012 and 2013 and then had the back issues taking her out of all of 2014.

But now, Paige hopes to come back. And when she does, she will come back knowing her back just might allow her to take swings she hasn't done before.

The work with Golf Channel has been a great experience for Paige. And she doesn't want to give it up. She hopes to keep working for the Golf Channel between events doing some work inside and outside the studio.

Paige lives in Arizona, where she can work on her game year-round and she makes the trips to Orlando for her Golf Channel work. She doesn't mind the travel. She would just like the next time she does plenty of traveling that it would be for golf tournaments.



Paige Mackenzie.

I hope she makes it back in a big way. I have known Paige for 15 years and even ran a celebrity Pro-Am with her for two years getting to know her away from the golf course. Paige is someone who deserves to see just how good she can be on tour. And now, she finally has that chance.

Steve Turcotte is editor of Inside Golf Newspaper. He can be reached at sdturcotte@comcast.net.



Bob Marlatt
Publisher

Steve Turcotte
Editor-Advertising

Kathy Marlatt
Operations Manager

Contributing Writers
Jeff Coston,
Mike Peluso,

Cartoonist: Harold Bluestein

Subscription rates:
\$17-one year and \$30-two years (U.S. funds).

Unsolicited articles and photos are welcome, however we will accept no liability for their loss or damage, and will only return them if prior arrangements have been made with the publisher.

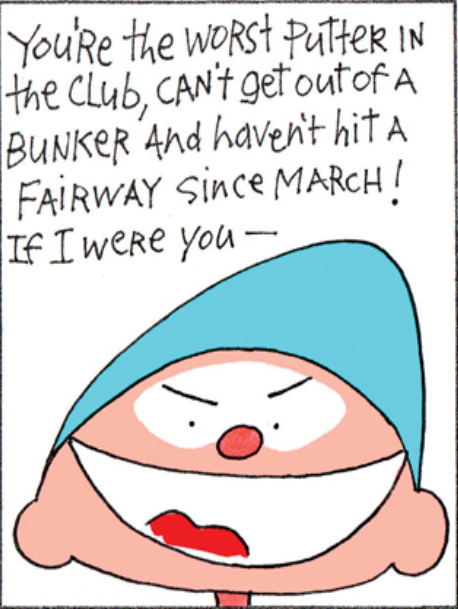
Courier Address
460 Dennis Blvd
Port Townsend, WA 98368

Mailing Address
P.O. Box 1890
Port Townsend, WA 98368

Phone
(360) 379-4080

E-mail Address
InsideGolf@cablespeed.com
www.insidegolfonline.com
INSIDE GOLF NEWSPAPER
is a trademark of
Northwest Publications, Inc. and is published on the first of each month.

Double Bogey



Harold Bluestein PGA



Rules Answer

Answer: 17-4. When a player's ball rests against the flagstick in the hole and the ball is not holed, the player or another person authorized by him may move or remove the flagstick, and if the ball falls into the hole, the player is deemed to have holed out with his last stroke; otherwise, the ball, if moved, must be placed on the lip of the hole, without penalty.

Inside Golf would like to thank Paul Lucien for his insight on the rules and the questions and answers.



"Bucket and Bites" Special
Large Bucket and Choice of Menu items
(Starter Cobb Salad, RiverRock Burger or Chicken Quesadillas)

ONLY \$13

Offer valid seven days a week through December 31, 2014
11am to Close. Available in the Bar and Restaurant Only

For **"PRINTABLE COUPONS..."**

Go to

www.Rentonwa.gov /Living in Renton/Maplewood/Value Coupons

December - Monthly Merchandise Special

15% OFF

All In Stock Regular Priced Merchandise
(excluding Balls, Gloves & Grips)

NEW YEAR'S EVE

WEDNESDAY, DECEMBER 31

Ring in the New Year with Muckleshoot Casino's New Year's Eve celebration!
Get the party started in Club Galaxy with free party favors and wristbands distributed at 8am for classic rock band, The Boinkers, performing live at 10am! Earn a free His and Hers Watch Set when you earn 500 base points from 6am – 6pm, while supplies last. Keep the party going with the first ever, New Year's Eve Ultra Lounge featuring DJ Jayceeoh at the Special Events Center, where \$20 gets you in with a drink ticket!
Visit muckleshootcasino.com for more information.

Entertainment subject to change without notice. Must be a Players Club member to participate in promotion.
Admission is always free in Club Galaxy with your Players Club card. Membership is free! Management reserves all rights.



2402 Auburn Way South, Auburn, WA 98002
800-804-4944 | muckleshootcasino.com



WinCo Foods Portland Open donates \$725,000 to NW charities; Bellevue golfer junior All-American

In its first year, the WinCo Foods Portland Open made plenty of headlines on the course. Now off the course the event still is in the news. WinCo Foods CEO Steven Goddard announced that the tournament generated \$725,000 for local charities, the second-highest charitable contribution for a first-year event in the 25-year history of the Web.com Tour.

WinCo Foods will distribute the charitable funds through the WinCo Foods Foundation, which focuses on giving back in the areas of youth well being and education, military veterans and their families, and continuing efforts to fight the battle against hunger. Over 100 charities in Oregon and Southwest Washington will receive financial support from the WinCo Foods Portland Open through the WinCo Foods Foundation.

Contributing to this charitable outcome, WinCo Foods donated the entire gate back to the local community, and for the first time in Oregon Professional Sports history, 100% of the revenue from every ticket sold was given to charity through the Nabisco Tickets Fore Charity™ program. This program gave over 100 Portland-area non-profit organizations the opportunity to sell tournament tickets and keep 100% of all the proceeds from their ticket sales. \$164,522 in tickets were sold to the event, and Portland Youth For Christ led the way with over \$35,000 in ticket sales. Nabisco was also generous enough to provide a \$50,000 Bonus Pool to reward the non-profits for their efforts, bringing the 2014 Tickets Fore Charity™ grand total to \$214,522.

Next year's WinCo Foods Portland Open presented by Kraft will be played August 24-30, 2015.

O.D. Vincent elected to Hall of Fame

Former Husky player, coach and administrator

O.D. Vincent was elected to the Golf Coaches Association of America Hall of Fame. He and five others will be honored on the December 8 at the GCAA banquet in Las Vegas.

Vincent, the 1988 Pac-10 Champion for the Huskies went on to coach at Washington, UCLA and Duke. In his career, he coached 30 individual medalists, 35 team champions, 11 PING All-Americans, four Cleveland Golf/Srixon All-America Scholars, two Conference Championship teams, two NCAA Regional titles and five NCAA top-10 team finishes, including the Huskies fourth-place finish in 1999, the best in program history. His teams qualified for the NCAA Championship in all 12 season he coached, advancing to the finals nine times including five top-10 finishes.

Bellevue golfer Junior All-American

Marianne Li of Bellevue, Washington, has been named a Rolex Junior All-American by the American Junior Golf Association, establishing herself among the top tier of current and former junior golfers from around the world.

Li, 17, earned Rolex Junior All-American honorable mention accolades for the second consecutive year following a 2014 season that included a pair of AJGA victories. The University of California, Berkeley verbal commit earned wins in consecutive weeks at the Ryan Moore Junior Championship and the AJGA Junior at Mayacama. The Newport High School senior earned two more top-10 finishes at the AJGA Junior at Lone Tree and the Sunriver Junior Open, finishing T4 and ninth, respectively. The No. 44 player in the Polo Golf Rankings also posted a T7 showing at the Junior PGA Championship in national competition.

Husky women roll at tournament

No. 6 Washington completed a dominant performance at the exclusive Nanea Golf Course on the Big Island of Hawai'i, winning the Pac-12 Preview by 11 strokes. The Dawgs finished at 11-under 865 for the tournament to defeat one of the best fields of the season.

The win was the third in four tournaments this fall

and could mean a No. 1 national ranking heading to the spring season. Washington finished 11 shots clear of second-place No. 7 UCLA (E), while No. 3 Stanford (+7), No. 13 Arizona (+13), Arizona State (+16) and No. 2 USC (+16) rounded out the top half the of the field, but were well back.

WSGA elects Tracy as new President

At the 93rd Annual Meeting of the Washington State Golf Association (WSGA), Barbara Tracy of Redmond, Wash. was elected president while two of the Association's key volunteers, Jim Marcacci and Mike Mueller, both of Bremerton, Wash., were honored as recipients of the George Holland Volunteer of the Year award. The annual meeting was held Saturday, October 25 at Fairwood Golf and Country Club in Renton, Wash.

Tracy has been a member of the WSGA Board of Directors since 2004, first as treasurer, then as vice president. She initially was the Club Representative for Mill Creek (Wash.) Country Club, and has now served as the Club Representative for Bear Creek Country Club in Woodinville since 2005. Before being involved with the WSGA, Tracy served as a representative for the Washington State Women's Golf Association (WSWGA).

Teen qualifies for USGA without partner

When Bill Walbert was called into surgery on Nov. 12, he never expected to make USGA history.

Walbert managed to qualify for a national championship without ever hitting a golf shot, thanks to a career round from his partner.

In an interesting twist to sectional qualifying for the inaugural U.S. Amateur Four-Ball Championship, Walbert's ticket was punched to the competition because his partner, Brent Grant, shot a bogey-free, 9-under-par 63 on his own ball at Honolulu Country Club.

Grant's score was one stroke better than two other teams. With 35 sectional qualifiers completed to date, Grant is the only competitor to have earned a spot in the field May 2-6 at The Olympic Club in San Francisco without a partner.

Players of the Year

Continued from Page 1

Championship. Carrigan also finished T43 in the Canadian Amateur Championship.

Proteau is also receiving her third consecutive PPGA Women's Mid-Amateur Player of the Year honor. Her year included a third straight run as champion of the Canadian Women's Mid-Amateur. Proteau was the BC Women's Mid-Amateur champion, finished T4 in the BC Women's Amateur Championship, and T49 in the Canadian Women's Amateur Championship.

Brandes compiled yet another superb season in 2014. He repeated as champion in the Washington State Senior Men's Amateur for the fourth straight year. He qualified for and competed in both the U.S. Senior Open and the U.S. Senior Amateur Championship, where he made it to the Round of 16.

Markle repeats as PPGA Senior Women's Player of the Year after she put together yet another impressive run locally as well as nationally. She won the Idaho Golf Association Women's Mid-Amateur Championship, and finished in the Round of 16 in the Pacific NW Women's Mid-Amateur Championship.

Huff was crowned champion at the AJGA PING Phoenix Junior at ASU Karsten in Tempe, Ariz. He also finished runner-up in the AJGA Ryan Moore Junior Championship, held locally in Lakewood, Wash. Huff competed in the Callaway Junior W

Ko capped her remarkable year with a win at the BC Junior Girls' Amateur Championship. She compiled top finishes in many events.



36 Holes of Championship Golf | Fantastic Course Conditions | 18 Holes of Foot Golf

Glendoveer Tennis

- Four Indoor Courts
- Drop in Play & Instruction
- The Only Indoor Public Courts in Portland!

Glendoveer Golf

Tournaments Too! We've got the BEST TOURNAMENT FOOD in Portland, powered by the iconic Ringside Restaurant!

COUPON

Glendoveer Golf Course...West Course Specials

\$15 Mon-Fri Anytime
Green fee included

\$25 Sat-Sun Anytime
Includes green fee, small bucket and sleeve of balls

Expires 12/31/14. Must present coupon.



14015 NE Glisan Street | Portland, OR 97230 | Tel: (503) 253-7507 | www.playglendoveer.com

DECEMBER GOLF SPECIALS

Premier Golf



Centers, LLC.

SEATTLE

Jackson Park GC
Jefferson Park GC
West Seattle GC

\$17 Special

Play after 12:00pm for only \$17!

Valid 7 days a week

Must present coupon

Expires 12/31/14



COUPON

BELLEVUE

Bellevue Golf Course

Daily Special

18 Holes of Golf, 1/2 Power Cart & Breakfast Sandwich or Hot Dog

Adult - \$39.00, Jr/Sr/Active Military - \$31.00

Valid Monday - Friday, before 1:00 pm

One coupon per person, per visit. Expires 12/31/14



COUPON

LAKE WILDERNESS

Lake Wilderness GC

Seahawk 12th Man Special

\$12 Green Fees after 12:00 pm

Valid Monday - Friday

Expires 12/31/14



COUPON

EVERETT

Legion Memorial GC

Sunrise Special

18 Holes of Golf, Rider Fee, Breakfast Sandwich & Coffee
Must tee off before 8:30 am and pick up sandwich before round or at the turn.

All Golfers - \$33

Valid on weekdays, except holidays.

Must present coupon.

Expires 12/31/14



COUPON

EVERETT

Walter Hall GC

Mid-Day Madness

18 Holes of Golf, Rider Fee, Hot Dog & Fountain Soda

Must tee off after 11:00 am and pick up food before the round.

All Golfers - \$33.00

Valid weekdays, except holidays

Must present coupon.

Expires 12/31/14



COUPON

INTERBAY

Interbay Golf Center

40% OFF in-stock

Men's or Women's Apparel item

Discount applies to originally marked price and cannot be combined with other coupons/promotions.

Certain exclusions apply.

Expires 12/31/14



COUPON

PIERCE COUNTY

Lake Spanaway Golf Course

Winter Special

18 Holes of Golf, Rider Fee, Range Balls, Hot Dog & Soda only \$19.99

Valid after 12:00 pm, seven days a week

Expires 12/31/14



COUPON

LYNNWOOD

Lynnwood Golf Course

"Crazy Weekend"

All you can play for \$10.00!

Valid Saturday & Sunday after 11 am

Must present coupon.

Expires 12/31/14



COUPON

Premier Golf



Centers, LLC.

SEATTLE

Jackson: 206-363-4747 • Jefferson: 206-762-4513

West Seattle: 206-935-5187 • Interbay: 206-285-2200

www.PremierGC.com



EVERETT

LM-425.259.4653

WH-425.353.4653

www.EverettGolf.com



PIERCE COUNTY

LS-253.531.3660

FS-253.588.0613

www.LakeSpanawayGC.com



BELLEVUE

425.452.7250

www.BellevuePGC.com



MAPLE VALLEY

425.432.9405

www.LakeWildernessGC.com



LYNNWOOD

425.672-4653

www.LynnwoodGC.com



WWW.PREMIERGOLFCENTERS.COM

Coston, Murray qualify for Senior PGA Championship

Jeff Coston of Semiahmoo Resort and Brent Murray of Oswego Lake qualified for the 2015 Senior PGA Championship in Indiana with some solid play at the Senior PGA Professional National Championship in Florida.

Coston was tied for the lead afte two rounds and finished in sixth place with a 278 total. He was six off the lead.

Murray finished with a 285 total and tied for 18th also earning a spot to the national event.

Other Pacific Northwest senior professionals who took part were Rob Gibbons of Arrowhead in Molalla who tied fo 53rd and Joe Carranza who was 74th. Also playing but not making the cut were Jeff Fought of Black Butte Ranch, Chris Van der Velde of Tetherow, Mark Gardner of Spokane and Steve Stull of the Tri Cities.

WSGA names Players of the Year

The Washington State Golf Association announced the 2014 Player of the Year recipients. The winners include Men's Player of the Year, Carl Jonson of Bainbridge Island, Wash.; Women's, Jordan Ferreira of University Place; Men's Mid-Amateur, Mike Haack of Bellevue; Women's Mid-Amateur, Amanda Jacobs of Seattle; Senior Men's, Tom Brandes of Bellevue; Senior Women's, Denise Kieffer of University Place; Junior Boys', Sam Warkentin of Bainbridge Island; and Junior Girls', Sierra Kersten of Spokane. Here's a look at the winners:

• **Carl Jonson:** Jonson had a tremendous year of amateur golf in which he dominated the leaderboards throughout the season, earning seven major top-25 finishes. His biggest victory of the year came when he conquered amateurs and professionals alike at Wine Valley Golf Club in Walla Walla, Wash. in late August to claim the Northwest Open Invitational title.

• **Jordan Ferreira:** Ferreira enjoyed an exciting and successful summer of golf in 2014. She dominated the Washington State Women's Amateur

Championship at Port Ludlow (Wash.) Golf Club, finishing 1-under par and winning by a margin of four strokes.

• **Mike Haack:** Haack won the Washington State Champion of Champions for the second year in a row. Haack played in the U.S. Mid-Amateur Championship after finishing with medalist honors in the qualifier held at Tumble Creek Club in Cle Elum, Wash.

• **Amanda Jacobs:** The Seattle native compiled an impressive year in the Mid-Amateur ranks. Jacobs out-played and out-lasted the competition in the Pacific Northwest Women's Mid-Amateur Championship at Lewiston Golf and Country Club in Lewiston.

• **Tom Brandes:** Brandes tallied another impressive and dominant season in 2014. He repeated as champion in the Washington State Senior Men's Amateur for the fourth time in a row at The Cedars at Dungeness in Sequim, Wash. He was runner-up in the Washington State Senior Champion of Champions, runner-up in the Pacific Northwest Senior Amateur Championship, and runner-up in the Pacific Northwest Men's Master-40. Brandes competed in two national championships, making a run in the U.S. Senior Amateur.

• **Denise Kieffer:** Kieffer put together a remarkable year on both the local and national stages. Kieffer won the Puget Sound Women's Golf Association Championship, finished third in the Washington State Senior Women's Amateur Championship, T9 in the Pacific Northwest Senior Women's Amateur Championship, and runner-up in the WSWG Championship. Kieffer qualified for the U.S. Senior Women's Amateur Championship at Hollywood Golf Club in Deal, N.J.

• **Sam Warkentin:** Warkentin dominated the junior ranks this championship season in the Pacific Northwest. His biggest accomplishment came in Creswell, Ore. where he won the Pacific Northwest Junior Boys' Amateur Championship held at Emerald Valley Golf Club. Warkentin also earned the Washington Junior Golf Association State Championship title.

• **Sierra Kersten:** Kersten repeats as the recipient of this award, having also claimed the honor in 2013. Kersten finished third in the WJGA Girls' State Championship, runner-up in the WIAA Girls' State Championship, and runner-up in the AJGA Ryan Moore Invitational.

Tour Players With Northwest ties

PGA Tour

- Ben Crane • Portland • No cuts made
- Robert Garrigus • Gresham • 188th on the list with \$15,616
- Andres Gonzales • Olympia • 22nd on list with \$433,334
- Troy Kelly • Bremerton • No cuts made
- Richard H. Lee • Bellevue • No events
- Ryan Moore • Puyallup • 4th on the list with \$1,328,500
- Alex Prugh • Spokane • 167th on the list with \$33,777
- Andrew Putnam • Tacoma • 72nd on the list with \$179,158
- Michael Putnam • Tacoma • 128th on the list with \$64,145
- Kyle Stanley • Gig Harbor • 164th on the list with \$38,675
- Nick Taylor • Ex-UW • 9th on the list with \$756,663

Web.com Tour

- Jeff Gove • Seattle • No events

Champions Tour

- Jeff Coston • Blaine • No events
- Fred Couples • Seattle • No events
- Rick Fehr • Seattle • No events
- Bob Gilder • Corvallis • No events
- Brian Henninger • Eugene • No events
- Peter Jacobsen • Portland • No events
- Kirk Triplett • Pullman • No events

LPGA Tour

- Jimin Kang • Seattle • No events
- Paige Mackenzie • Yakima • No events
- Wendy Ward • Edwall, Wash. • No events

LPGA Symetra Tour

- Lindsay Aho • Brush Prairie • No events
- Amy Eneroth • Spokane • No events
- Jessi Gebhardt • Bellingham • No events
- Sadena Parks • Spanaway • No events
- Renee Skidmore • Everett • No events
- Kim Welch • Ex-WSU • No events
- Christy Yun • Tacoma • No events

Did you know....

• Only four percent of WSGA golfers play in championships. The WSGA provides services for the "everyday golfer" (the other 96 percent!) as well, which includes preferred green fees, discounts on travel, exclusive offers, a free mobile app, course ratings, GHIN handicap, and much more.



• The Oregon Golf Association has selected Fran Fuller as its Volunteer of the Year. The OGA held its annual Volunteer Appreciation Day at Creekside in Salem as a day to honor all of the volunteers that work with the group. Fuller has been a course rating volunteer since 2009 for the Oregon Golf Association.



TUMWATER VALLEY GOLF CLUB



UNBELIEVEABLE WINTER 2014/2015 RATES!

Rates valid November 1, 2014—February 28, 2015

\$ 10
WEEKDAY GREENS FEES

CARTS
7 Days a Week
Per Rider \$10
Per Cart \$20
Trail Fee: \$10

\$ 15
WEEKEND GREENS FEES



Don't miss First Tee instruction on Saturdays this winter at Tumwater Valley!

Visit www.thefirstteesouthpugetsound.org for more information!

Tumwater Valley Golf Club 360-943-9500
4611 Tumwater Valley Drive SE Tumwater, WA 98501



OKiGolf TAKES THE RISK OUT OF WINTER GOLF

EVERYDAY WINTER RATES*

- Reduced Players Cardholder Rates Monday - Sunday.
- Twilight - One hour earlier starting at 1:00pm.
 - \$25 Most Courses*, Cart Included.
- Inclement weather?
 - No worries with our flexible Raincheck Policy.

Check Out These Sample Rates:

Washington National or
Redmond Ridge

\$40* Mon - Thurs

Cart Included

Newcastle -
China Creek

\$65* Mon - Thurs

Cart Included

*Rate based on Players Cardholder pricing November 1, 2014 - February 28, 2015

Visit OkiGolf.com to View All the Great Winter Rates

**2015 Players Card
On Sale Now!**



Platinum Players Card | \$349⁹⁹

Includes six rounds with cart at any of Oki Golf's nine public courses. Take advantage of the added flexibility to play your favorite courses multiple times.

Original Players Card | \$109⁹⁹

Receive one or two rounds, including cart, depending on course.

Players Card Benefits: included in all players cards

- Exclusive discounted rates available at Oki Golf's nine public courses
- Special twilight rates as low as \$15, including cart
- Access to exclusive cardholders offers throughout the year
- Complimentary USGA Handicap Service (provided by EZLinks)



Visit www.okigolf.com or any Oki Golf course for details

Destination: Courses of Troon

Troon Golf offers up some terrific courses many that offer the perfect warm getaway

Troon Golf started as one facility in 1990 and has since grown to become the largest third party manager of golf and club operations in the world. Troon operates in more than 29 countries and 34 American states, from private courses to resorts and daily fee courses.

Pacific Northwest golfers can take advantage of the courses in the west from Arizona, with 17 Troon properties, California, where vacation package opportunity abound from Palm Springs to Napa Valley and San Diego. There are also properties in Nevada and Hawaii with vacation packages.

Arizona: With ideal year-round weather round, Arizona golf is a dream golf vacation package destination. Cities like Phoenix, Scottsdale, and Tucson are popular locations for golf vacations and have excellent night-life and entertainment options to go with it. Arizona golfers will not only find some of the best golf in the West, but a range of accommodations from friendly condos and town-homes to five star accommodations.

With nearly two dozen Troon golf courses to choose from in Arizona, you will be amazed by the different layouts, challenges and topography that each course brings.

California: Palm Spring is one of the most popular golf sites in California with it's towering palm trees, tropical plant life and coastal breeze it's a golfer's paradise.

Maderas Golf Club is a must play golf course and can be included in our new marketing relationship with the Lodge at Torrey Pines. Located in the ever sunny San Diego area, Maderas has been ranked #1 in Troon Customer Service and was voted #1 Course in San Diego from 2003- 2007 by the Zagat Survey. San Diego golf vacation packages can be one of the best in California.

Nevada: Although great golf can be found throughout the state, the Southern tip of Nevada, also known as the Las Vegas Territory has become a golfers' Mecca offering year-round play and the largest concentration of golf resorts and clubs. In addition, the Las Vegas Territory is also home to two excellent Troon golf clubs.

Hawaii: With locations like Princeville Makai Golf Club, The St. Regis Princeville Resort, Kapalua Golf Resort (Bay Course and Plantation Course), the Kapalua Villas and The Ritz-Carlton, Kapalua, you just can't go wrong as you soak up the flavor of the Hawaiian experience. The Kapalua Plantation course offers a scenic experience and is also the home for the PGA Tour's Tournament of Champions held every January and featuring the champion of the previous year's PGA Tour events. The Bay course sits closer to the Pacific Ocean, while the Plantation course lies further up the hill with some breathtaking views. The 17th and 18th holes are dramatic downhill holes making for great TV when the tournament is on.



Troon Golf operates courses throughout the world, including Poston Butte (top) and Pronghorn.

It's a Great Day at North Shore!

COUPON

1/2 OFF

POWER CART RENTAL

Must present coupon. Not valid on Holidays or combined with any other offers. Expires 12/31/14.

Tee times now available online 24/7
www.northshoregc.net

Find us on FACEBOOK!

4101 North Shore Blvd. NE • Tacoma • (253) 927-1375 • 1-800-447-1375

NORTH BELLINGHAM GOLF COURSE

"A Public Course with Private Course Conditioning!"

Want Great Greens & Fairways in the Winter? Then Give Us a Try!

For Tee Times: (360) 398-8300 or Toll Free (888) 322-NBGC
www.northbellinghamgolf.com

205 WEST SMITH ROAD ~ BELLINGHAM, WASHINGTON

AUBURN GOLF COURSE

2015 Auburn Men's Club

All Club Members receive the following benefits:

- 2015 USGA GHIN Handicap
- One Free 18-Hole Green Fee (Value up to \$42)
- Eligibility for Monthly Club Tournaments (Includes Major Events)
- Eligibility for over 50 weekly competitions (March – October)
- Merchandise Discounts in the AGC Pro Shop
- Food & Beverage Discounts in the Copper Falls Restaurant
- 50% Discount Off 2015 Player's Card

2015 Membership Fee \$85

... Early Bird Bonus ...

Sign up by March 31st, 2015

And receive a SECOND FREE ROUND OF GOLF!!

(\$42 Value)

Call us at (253) 833-2350 for more information!

AUBURN GOLF COURSE-29630 GREEN RIVER ROAD SE-AUBURN, WA 98092-WWW.AUBURNGOLF.ORG




It's Golf Bucket List Time. First Stop: Arizona

When you want to play the very best, tee it up with Troon Golf Arizona.

There's something transcendent about golf in the desert—where vivid green fairways and bright blue skies meet rugged terrain. With Troon Golf Arizona, you'll be playing some of the best courses the Southwest has to offer, and experiencing the finest playing conditions and friendliest customer service in the game.



EXPERIENCE ARIZONA'S BEST COURSES AT THE BEST AVAILABLE RATES: TROONGOLFAZ.COM

TROON GOLF

Experience Arizona...Troon Golf Style

TroonGolfAZ.com



2014-2015 Winter Tournament Series

All our winter tournaments are open to anyone!!!

Holiday Classic – Sunday, December 7th, 2014
Four Player Teams - (1) Gross Ball – (1) Net Ball

Poison Ball – Sunday, January 4th, 2015
Four Player Teams - (1) Player is "Poison Ball" – (3) Players "Scramble" – Alternates every hole.

Campbell Scramble – Sunday, January 25th, 2015
Four Player Teams - (4) Player Scramble

Cabin Fever Classic – Sat Feb 21st/Sun Feb 22nd, 2015
Two Player Teams (2) Day Event - (2) Player Scramble – Both Days

Tip & Tuck Scramble – Sunday, March 22nd, 2015
Four Player Teams - (4) Player Scramble

See our website for more great deals!
www.mtsigolf.com



Mount Si Golf Course
9010 Boalch AVE SE
Snoqualmie, WA 98065
(425) 391-4926

ANNUAL FOOD DRIVE
November 1st – March 31st, 2015
Bring a non-perishable food item and receive \$2.00 off the already low winter rates!
For rates please visit our website at www.mtsigolf.com

PALACE TUKWILA

POKER ROOM

TEXAS HOLD'EM • OMAHA

OPEN DAILY AT 10AM

- ♦ Monte Carlo & Bad Beat
- ♦ \$600 Hourly High Hands
Thurs 12 pm – 12 am & Sat 12 pm – 8 pm
- ♦ Tournaments

REWARD

50% OFF ANY DRINK & \$10 MEAL VOUCHER

Join any live game (bring this ad) and receive reward. Must have valid ID and be 21 or older. One per person. Not Valid Thurs & Sat. Expires 12/31/14



14027 Interurban Ave S • Tukwila, WA • 206-466-2561 • palacetukwila.com

Marvelous Maui

There's no shortage of championship golf and beautiful sights on the island of Maui

By Steve Turcotte, Inside Golf Editor

Tired of the weather that Mother Nature throws our way in the Pacific Northwest every winter? The cold, the wind, the frost delays everything? Then it might be time to make that investment in your golf game and take a trip to the island of Maui.

OK, let's be real here first. Any time is a great time to head to the islands for a golf trip. Every island has its own golf treats from terrific courses to great views to the best resorts.

But winter time is especially the right time of year considering the weather in the Northwest is not exactly the best for wearing shorts, a golf shirt and playing 18 holes.

On Maui, there are plenty of choices, from the ocean-side course at Kapalua's Bay course to the hilly terrain of Ka'anapali's Kai course, Maui offers a little something for everyone.

And these are courses that get your attention from the first tee and hold it all the way through to the last putt. Let's take a look at some of the golf that Maui has to offer:

• **Ka'anapali Resort:** This is a resort with two golf courses called the Royal and Kai. Both are terrific championship courses, in fact the day we played the Kai course the Royal course was hosting some of the top college teams in the country for a tournament.

The Royal course is 52 years old and is a Robert Trent Jones design. The course has hosted some of the big events through the years including the Senior Skins Game with Arnold Palmer and Jack Nicklaus.

The Kai course has some terrific ocean views as it winds through some hilly terrain. The course was also the host for the Golf Channel's Big Break Ka'anapali.

And there are always deals to make your trip inclusive - there are deals from \$299 to play both courses while you are there.

The resort started a Fit Club program back in 2011 where golfers walk and play holes 1-6 on either course anytime after 4:00. The program has grown to over 75 players a month. The courses are also kid friendly having put in a set of tees and juniors play free program is a big hit.

• **Kapalua Resort:** The Plantation course is known for its hosting of the PGA Tour's Tournament of Champions. Television does not do the course justice. This is a course with some great views, rolling terrain and a set of closing holes that are terrific. The 17th hole is a downhill par-4 with the Pacific Ocean as a backdrop. Long drivers will find trouble off the tee if they don't back off. Dramatic elevation changes and nature's challenges will test your ability while you experience golf at its finest.

The Bay Course at Kapalua hosted the 2008

Kapalua LPGA Classic, the Bay Course winds its way through towering palms and flowering hibiscus. The tee shot on the fifth hole carries nearby Oneloa Bay. Views are at a premium all along the Bay Course.

The Kapalua Golf Academy sits near the Bay Course and provides a terrific place for some instruction in case the golf game has gone sideways while on vacation.

Wailea Golf Resort: Among the world's great golf destinations, Wailea has plenty to offer with its sand beaches, resort setting and three golf courses - the Gold, Emerald and Blue. Renowned for its ideal golf weather - typically sunny with gentle breezes - Wailea Golf Resort is rated among the best golf courses in the country by both *Golf Magazine* and *Golf Digest* for the quality of its courses and accommodations.

The home course of The Champions Skins Game from 2001 to 2007, the 7,078-yard Wailea Gold is a masterfully designed layout. Its strategic and rugged design takes advantage of the terrain's natural undulations and phenomenal ocean vistas, but four to six tee boxes built into every hole makes it a suitable track for virtually every player.

Shortly after opening in 1994, the Wailea Gold was named by both *Golf Magazine* and *Golf Digest* as one of the country's 10 best new resort courses. It was also hailed as one of the world's best designed courses by the readers of *Conde Nast Traveler* in the magazine's first golf resorts poll.

The Emerald and Blue courses at Wailea are also a must-play when you are on site.



There is plenty of terrific golf to find on the island of Maui including Wailea Resort with its three courses including the Gold (bottom); Kapalua's Plantation course (pictured above) is the home for the PGA Tour's Tournament of Champions; Ka'anapali Resort (very top) features two courses.



Photo by Matthew Thayer

Hey Puyallup!!

Give the Gift of Golf!



ACCEPTING NEW MEMBERS

JOIN NOW FOR... \$0 INITIATION FEE

2519 E MAIN AVE, PUYALLUP
Across from Daffodil Bowling Alley

Offer expires 1/31/2015 and cannot be combined with any other offers.

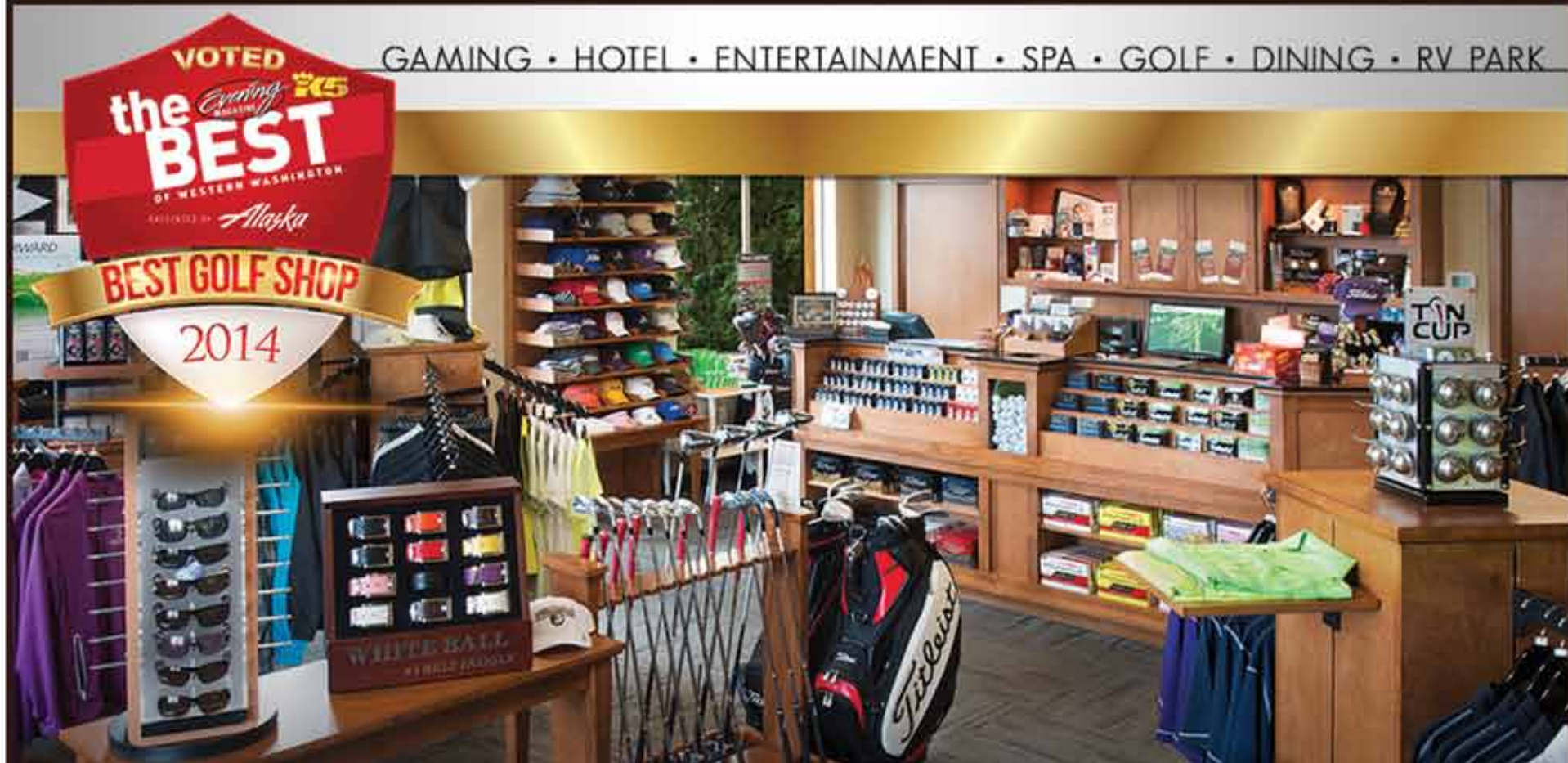
SAVE
\$500

*Experience a Private Course
in Your Backyard*

253.845.2056

www.lindengolf.com

GAMING • HOTEL • ENTERTAINMENT • SPA • GOLF • DINING • RV PARK



It's not how far you go, it's how far you get away...

LITTLE CREEK
CASINO • RESORT™
www.little-creek.com



Nile Shrine Golf Course is a complete golfing experience

The Nile Shrine Golf Course has been providing golfers of all ages and ability a challenging place to knock the ball around for 46 years (opened in July 1968). The course is part of the Shriners Fraternal Lodge.

It's not a long course but it's a fun course with a lot of character. No two holes are alike and long ball hitters will need control, as many of the fairways are narrow with trouble on either side. The popular course is just 15 minutes north of Seattle off I-5 near the Edmonds/Kingston Ferry exit in Mountlake Terrace.

The course sits adjacent to Ballinger Lake with a few holes right near the edge.

The Nile has proven that it doesn't have to be long to be a challenging test of golf. At slightly over 5,000 yards, accuracy is premium

over distance. Like the number 3 hole: a dog leg left, about 210 yards to the corner, with OB left and water on the right side all the way down.

"Shriner's have had a long love affair with golf, going back to the building of Medinah Country Club, which has hosted the worlds best players, to sponsoring the Justin Timberlake Shriner's Hospitals for Children Open PGA Tour tournament," said Joe Korn, the head professional at the Nile course.

The course has some outstanding par 3s like number 13 that is 182 yards from an elevated tee where club selection is difficult and the wind can be a big factor.

For tee times or more information please refer to www.nileshriners.org or call the pro shop at: (425) 774-9611 ext. 512.



Tall trees and numerous hazards make the Nile Shrine Golf Course a challenging round of golf.



A great winter course, North Bellingham is known for its great conditioned greens and fairways.

North Bellingham: Scottish-style links course is a Northwest award winner

North Bellingham Golf Course has been honored with a four star rating by *Golf Digest*. Of the 101 18-hole championship public courses in Washington State, only 19 have earned this distinction.

Course designer Ted Locke wanted to build a real Scottish-style links course on the property and wanted to preserve the openness of the site, with its subtle undulations that he thought fit the topography of the land perfectly. Many of the greens allow for running approach shots, something you won't find on too many courses today. The prevailing winds are an integral part of the course and have become part of the signature of the course. Free of visual obstructions, like trees and hills, makes for some fantastic panoramic views of Mt. Baker on clear days.

The course opened in July 1995 and has four

sets of tees, playing to 6,816 yards from the tips. The par-72 has a slope of 126 from the back tees. The openness of the layout can be deceiving as water comes into play on 14 of the 18 holes and can sometimes be difficult to see from the tee or from long approach shots. The course is known for its friendly staff, well conditioned greens and fairway, and dry playing condition, especially in winter. One review online found similarities with Crosswater in Bend.

Discounts are available for juniors and seniors with several advertised monthly specials.

To find out more about North Bellingham GC see: northbellinghamgolf.com or to make a tee time call (360) 398-8300. You can e-mail your inquiries to nbgcpro@frontier.com.

The course is located at 205 West Smith Rd in Bellingham.

HOME

THE HC

For the Holidays

GIVE THEM THE GIFT THAT WILL BRING THEM HOME!

Our Gift to You in December

Cart \$8.00

Friday Green Fee the Same as Monday - Thursday

2300 GOLF HOUSE RD
DUPONT, WA 98327

FOR TEE TIMES CALL: 866-964-0520
ONLINE AT WWW.THEHOMECOURSE.COM

*Cart special is without doors, cart with doors is \$12.00. *Taxes not included.

HC

THE HOME COURSE

MEN'S CLUB

New Member Price \$50

Membership includes:

- USGA Handicap Index computed by GHIN
- One complimentary round at The Home Course
- Five complimentary buckets of range balls at The Home Course
- 10% discount off merchandise in the pro shop
- 10% discount off food at the snack bar

For further information please visit

The Home Course Men's Club website at

<http://www.ghin.com/eclub/wsqa/thcmen/>

2300 Golf House Road | DuPont, WA

www.thehomecourse.com

The Lesson Tee: To improve on the putting stroke, follow these easy steps

A while back I played in the PGA Senior Professional National Championship in Aldie, Virginia. The golf course is a Jack Nicklaus design called Creighton Farms, a beautiful facility and layout. The tournament was four rounds and with over 250 professionals from around the country. I played solid and finished 10th. I won the event before so I guess that makes me a fossil.

This Nicklaus course seemed a bit different than many others I've played. The greens were very tricky and some were scary. I'd like to talk this month about putting. Here are some keys to successful putting on any green, but particularly fast and undulated putting surfaces.

I will take several key areas to successful putting as I talked to and putted much with players that have influenced my putting. Ben Crenshaw, Loren Roberts, Morris Haltalsky and Bob Rotella. Of these four people mentioned you have most likely heard of all but Morris. During Morris' many years on the PGA Tour and now the Champions Tour he has lead each tour in putting.

1. Hitting the sweet spot of the putter:

Every putter has a sweet spot. Usually it is the dot or line on the putter head. Striking the ball solidly on the sweet spot is a skill that is overlooked by golfers and teachers. (It is also overlooked as a skill on a full shot). It is assumed a proper/solid strike just happens. Not true. Practice this skill. A ball struck on the sweet spot rolls out the same distance; rolls true and does not jump off the face left or right. This skill is a non-negotiable.

2. Proper speed:

People three putt because of poor speed



much more than poor line. The crazy thing is golfers spend 80% of their energy on line. It should be the opposite. Focus 80% on speed especially on putts 15-40 feet. Spend more time on 30-50 foot putts focusing mainly on speed. People usually drop 3 balls at 6-12 feet and practice missing. Start your putting hitting 40 footers to no hole just to develop good touch and speed on the green.

3. Develop your skill from 5 feet and in:

After your speed practice on 30-40 footers, work on your putts at 3,4 and 5 feet. There is great value in practicing even 2 1/2 to 3 footers. Great value in seeing the ball go in. Develop your commitment to a read. Also a tension free routine. It is a safe putt on the practice green that sometimes is not so safe on the course because attachment to score or missing interferes in our mind. Be aware of this tension and let it go. These short putts are great to develop our skill and awareness of sweet spot striking also. Make a few of these short putts before you go on the course.

4. Trust/Commitment:

Develop your awareness to the questions:

Am I trusting my speed, strike, read and even myself? Or am I afraid to miss? On any shot in golf we must TRUST and be COMMITTED and FREE. This is also a skill to develop and be aware of. Ask yourself the question am I the same putter on the course as the practice green? Why not? There is no rule to try harder on the golf course. (Or the closer we get to the hole). Try trying less. I know it is counter cultural to what we have been taught. Try trying less on all shots. Trust what you have trained. Read the book, "Extraordinary Golf" by Fred Shoemaker.

5. Develop your technique:

Notice I put this last. Most people have better putting strokes than they think. Their technique is better than their putting statistics. I contend to say if you did steps 1-4 your putting would improve dramatically.

Again, technique. I use an arc board or a simple 2 x 4 and a Joey Sindelar putting clip on my technique. The board works the path of my stroke and the clip the clubface. As in the golf swing the clubface is much overlooked by the player and even educators of the game. Putts are missed technically much due to an open or closed clubface which feels like a pull or a push. Players are more apt to think it is path when in reality it is clubface.

The board can be used all winter indoors or out. Work this technique and your consistency will improve. Golfers rarely take putting lessons. See the value in putting and short game lessons and your scores will improve faster.

Jeff Coston is a former PGA Tour player and a 20-time Pacific Northwest PGA Player of the Year. He can be reached for appointment at Semiahmoo Resort by calling 360 201 4590 or find out more about Jeff at jeffcoston.com.

The Cure Putter: Are you ready for this?

Review of the Cure Putter "the most technologically advanced putter ever made."

The Cure RX2 putter was introduced at the 2014 PGA Show where it gained a lot of interest. It is a 6" milled aluminum head with an adjustable lie angle and changeable weights that can be added to the heel and toe, giving it a very high moment of inertia (MOR).



So, here's the deal: The adjustable lie angle is a huge benefit as it allows users to experiment and fit the angle to their personal preference. The ability to add weights to the toe and heel gives the putter the largest sweetspot of any putter, we know of.

The weight disks range from 2 oz. to 12 oz. and can be added together to get even more weight.

A triangle alignment system is accomplished with two aluminum disks place face-up on the toe and heel that, when the putter is placed behind the ball, forms a triangle.

Pros: the adjustability is great and it's fun to experiment with the different lie and weight options. The big MOR is really nice for those off-center strokes we all make from time to time.

Cons: We found the ball was a bit dead coming off the face, but with a little practice, speed control can be accomplished.

Though there are some nice adjustment features, we would have liked to see a handle weighting system incorporated to offset the weight being added at the putterhead.

In short, if you like to experiment with different weights and lies, you should try this putter, it might just be the putter you've been waiting for.

The Cure RX2 retails for \$269.95, on their website: cureputters.com.

Lipoma Firs Golf Course

WE REALLY ARE A DRY GOLF COURSE!

WINTER RATE

Nov 2014 thru March 2015

\$15^{+tax}

Monday - Friday

\$25^{+tax} Sat & Sun

18 Holes

For reservations please call:
(253) 841-4396 or
1-800-649-4396

- 27 holes of Championship Golf
- Beautiful tree lined course with spectacular views of Mt. Rainier
- Great walking course
- Driving Range, Practice Putting Green and Sand Trap
- Best breakfast and price in town with friendly staff!
- Family owned

187th & Meridian So. • Puyallup, WA

THE ALL NEW ALLENMORE GOLF AND EVENTS CENTER

BEST DEAL IN GOLF!!!

For current specials, visit www.GolfNow.com

Restaurant now OPEN!

Tacoma's newest dining venue Smoke + Cedar, is now open. Famous Chef Gordon Nacarrato has created a menu to delight your taste buds and a beautiful bar with all your favorites and a few unique drinks to enjoy while you watch the action on the course. Located in the "Heart" of Tacoma offering Breakfast, Lunch and Dinner along with catering for your event, onsite or off.

allenmoregolfcourse.com

Pro Shop: 253-627-7211
Events: 253-272-1117

2013 S. Cedar St.
Tacoma, WA 98405

Rules of the Game: Croquet-style putting is not OK on the green, but OK off of it



I remember way back in the day when Sam Snead used to putt “croquet style.” He had phenomenal success and then they banned the “croquet-style” putting. Why was it banned?

The reasoning behind the ban on croquet-style putting has become almost an urban legend. Some say the reasoning was that Snead had an unfair advantage using it. Others say that an influential member of the USGA Rules Committee kept losing money to a friend who used it and successfully lobbied to have it banned. Yet others said that it was considered an unnatural use of the putter. At any rate, Rule 16-1e prohibits “making a stroke on the putting green from a stance astride, or with either foot touching the line of putt or an extension of that line behind the ball.”

What exactly is meant by standing astride and either foot touching an extension of the line of putt?

Remember that the Line of Putt is the line the player wishes his ball to take after a stroke from the putting green. “Standing astride” that line means that one of the player’s feet is on one side of that line and the other foot is



on the other side of an extension of that line. Remember that an extension of the line of putt extends behind the ball, but not beyond the hole.

What if a player wants to hole out a short putt and avoid standing on another player’s line, and therefore has to stand on an extension of his line of putt?

The Exception to Rule 16-1e allows that, and there is no penalty.

There seems to be an ongoing controversy among players who say that a player is penalized under this Rule if he reaches across the hole and taps in a short putt. Is that a penalty?

Contrary to popular belief, there is no violation of Rule 16-1e when a player reaches across the hole to tap in a putt. Remember

that the line of putt does not extend beyond the hole. Look at the picture. The short dotted line is the line of putt. The player is neither touching it, standing astride it, nor standing on an extension of it.

What if my ball is on the fringe of the green? Can I use a croquet-style putt from there? Yes, you can. Remember that the Rule only applies to the player’s line of putt. The line of putt originates on the putting green. A stroke made from the fringe is not, by Definition, a line of putt, even if a putter is used to make the stroke.

Mike Peluso is a rules official with the USGA, PNGA and other organizations. He can be reached at mikepeluso@comcast.net.

Women’s golf: Go ahead and get your lady some nice golf Christmas presents

By Becky Fossum, LPGA

Women love to shop. Here is what is on the top of my golf women’s Christmas wish list:

- New golf shoes
- Matching golf outfit (skirt & top)
- Golf balls
- Golf gloves
- Golf GPS (Watch)
- Upgraded driver
- Golf get away anywhere where the weather is good. (And by the way, the weather is always good where I live during the winter months in Palm Desert, Calif. Maybe you can even take a lesson while you are here).

I would be willing to bet \$50 to get your wife on the golf course..... Buy her cute golf shoes & golf skirt..... This works all the time!!! Women love to show off the new golf clothes.... This will get her back on the golf course.

Women sizing tips: look in her closet & find what size she is.... If all else fails... Get her a “smaller size” ... Than you think. Ask the golf staff if that golf brand runs normal sizing or smaller. A few golf brands run 1-2 sizes smaller (Polo & Ralph Lauren are 2 brands that I feel run small). Brands like: Sport Haley, Nike, Adidas, EP Pro, Callaway, Jamie Sadock...All run pretty normal to size.

Happy shopping & happy holidays! If you feel good... You will play good!

Becky Fossum is an LPGA teaching professional.

NILE GOLF COURSE & #19 BAR & GRILL IN MOUNTLAKE TERRACE

18 HOLES OPEN TO THE PUBLIC
Exit #177 off I-5, West 1/4 mile on the right

Coupon

Two Rounds of Golf with a Cart
Only **\$63!!**

Maximum of two golfers per coupon.
VALID AFTER 10:00AM ONLY.
NOT VALID FOR GROUPS OF 20 OR MORE.
Expires 12/31/14.

Book your tee time today at www.nileshrine.org

Check out our website for more coupons: www.nileshrine.org

TEE TIMES: 425-776-5154

Discovery Bay Golf Club

2 play for \$40

Two Golfers, 18 holes with Cart

We have invested in new aggressive drainage and fairway top-dressing program and the results are **REMARKABLE**.
Carts are allowed on the course. Come and experience the drier, Discovery Bay Golf Club.

18 Holes of Challenging Golf

The 19th Hole Deli OPEN DAILY

360-385-0704
7401 Cape George Road, Port Townsend, Wash.
www.DiscoveryBayGolfCourse.com

MUST PRESENT THIS COUPON
Offer good through 12/31/14

Gig Harbor's Gem!

WE ARE OPEN TO THE PUBLIC!
• Great Golf! • Great Food!
• Great Service!
With a Great Price!

3604 22nd Ave NW Gig Harbor, WA | 253.851.5193 | www.madronalinks.com

MADRONA LINKS golf course

A Ken Tyson Design

3 MAN SCRAMBLE
January 24th 9am shotgun
\$75 a player

Includes green fees, range balls, prize fund and food after the round.
This tournament is open to all players, one pro allowed per team.
Flights and payout based on the number of entries.

MADRONA LINKS MEN'S CLUB

NOW INTRODUCING...
Social memberships for people who already have a current GHIN at another course.

You can join our Men's club for **\$35** and be eligible to play in all tournaments.

Please go to www.madronalinks.com to get entry form for the tournament and men's club.
Also, visit Madrona Links and Hacker's Facebook pages for daily updates!

Frost delays: Courses use them to protect the turf in the cold

By R.D. Pete Petersen, Special to Inside Golf

Winter is just around the corner, and along with it comes cool, crisp mornings and those dreaded "Frost Delays." Have you ever wondered why some courses have frost delays? The answer is to protect the turf, and preserve the overall playing conditions of the golf course.

Frost is dew which has accumulated on the blades of grass in the form of ice. The ice that forms on the outside on the blades of grass hardens and even freezes the cells within the blades of grass. When hardened or frozen, the cells become extremely brittle and can be easily crushed or ruptured, which results in damage to the cell membranes within the blades of grass. Once the cells have become damaged, the blades of grass loose their ability to function and grow normally.

Although you may not see any immediate damage, the effects will generally emerge within 24 to 48 hours as the blades of grass turn a dark green to brownish black color. The damage itself can range from; very minor, which may heal within a few days, to the extreme, which can result in total loss of the turf during the winter months and take months to recover. It's hard to believe that by simply walking across a frozen or frost covered putting green could be so potentially damaging to the turf.

Another issue affecting putting greens during times of frost is the build-up of ice or frost on the spikes of player's shoes. When players are allowed to walk on frozen or frost covered turf, ice accumulates or builds up on the spikes of their shoes forming large clumps resembling football cleats. These cleat-like clumps can cause depressions or dents on the surface of the putting green with ever step. The end results of these depressions are putting greens that are uneven and bumpy particularly around the hole locations. Those depressions can have a negative effect on the overall playing condition of the putting greens and may take several days to recover.

With these two issues in mind, golf courses are challenged to make a decision; is it worth the amount of revenue lost during a Frost Delay to avoid the potential damaging to the turf and possible adverse affects to the playing conditions of the greens and the course, or do you take the risk and hope for the best? The U.S.G.A. Green Section through turf research studies strongly recommends that you avoid playing or walking on turf during times of frost or frozen turf conditions because of the potential adverse affects.

So, remember to be patient the next time you arrive at the course and you're facing a Frost Delay, the course has made the decision to protect the turf against possible damage. Keep in mind if you like quality greens that it's for the good of the turf and insures the best possible playing conditions for all players.

R. D. Pete Petersen, Jr. is the Superintendent of Golf Operations at Riverbend Golf Complex in Kent, Wash.

Need some help on the greens? You might get some help from AimPoint

Jeff Shaw, PGA has been teaching golf for over 30 years. He also teaches golfers how to read greens with AimPoint technology. It's been said that it takes 20 to 30 years to be a good green reader. Not so with AimPoint. In one of Jeff's clinics the student will be able to take what they've learned in two hours and read any putt on any golf course effectively.

AimPoint is an Emmy award winning technology that was originally developed for the Golf Channel, by Mark Sweeney. Remember the big green line that was super imposed onto the green? When a player's putt was on that line, at the right speed the ball would go into the hole. That technology has evolved over the past few years into a chart that would give the player the correct break, in the number of inches.

Then came along the Express read. This is what you see top players like Stacy Lewis use on the LPGA Tour. She feels slope then holds up fingers to give her the correct amount of break to play. Stacy has been using the Express read with great success. In fact, there are professional players on every Tour around the world using the Express method.

There are some secrets however that Jeff cannot reveal. When you attend a clinic you'll learn those secrets that make the technology work. The method is very easy to learn, and Jeff has taught juniors from age 7 to seniors over 80, college coaches to college players and tour caddies to tour players. All have found it very user friendly. Sure, there's always going to be someone that thinks they know how to read a green and think it's not for them, but you can't fight physics. And once you trust your feet instead of your eyes, then you'll start seeing how putts react, which will allow you to make a more trusting stroke and ultimately make more putts.

We've perpetrated many myths through the years about green reading. You've heard them, everything breaks toward Indio or the left edge of Molokai. Or grain grows toward the setting sun, or is it the rising sun? Jeff dispels many myths in his clinics.



LPGA star Stacy Lewis uses AimPoint

But one thing that is not a myth anymore, is how to read a green the AimPoint way. Fast, simple and accurate.

Jeff also teaches the full swing on a machine called RoboGolfPro. Now that you've learned how to read a green and you're making more putts, the next step is how to make a repeatable swing. This 900 pound machine will "make" you swing on plane and fault fix the inconsistencies you already have. On the very first swing you will feel what the tour players feel. A simple move that is easy to repeat. Jeff believes that golfers get into bad habits because they have never felt where the club is supposed to go, or how it gets there. With RoboGolfPro it goes there every time. AimPoint and RoboGolfPro are truly the "Unfair Advantage".

For more information about AimPoint or RoboGolfPro visit www.northwestgolfinstruction.com or email Jeff at jeffshaw@pga.com.



Cut Your Learning Time... Shoot Lower Scores!




AimPoint Express
Used by **Stacy Lewis**
and pros on every Tour.

AimPoint Green Reading and RoboGolfPro are the "unfair advantage"

AimPoint and RoboGolfPro

The Unfair Advantage

Northwest Golf instruction

To learn more go to
northwestgolfinstruction.com
To schedule a lesson or purchase a gift certificate contact Jeff Shaw, PGA
206-612-3048
jeffshaw@pga.com





Feel what the pros feel **instantly!**
Learn the **perfect swing** with **RoboGolfPro!**
robogolfpro.com



Gift Certificate
RoboGolfPro

This Christmas....

Give the Perfect Gift for the Golfer on your list!!



RIVERBEND
GOLF COMPLEX

Events at RIVERBEND

Riverbend Winter Tournament Series:

18th Annual Winter Better Ball.....	Dec. 13th, 2014
18th Annual Winter Scramble.....	Jan. 17th, 2015
21st Annual Winter Ball Buster.....	Feb. 21st, 2015



**Bring your
old clubs for
a trade-in
credit!**

Join us for
**FREE hot
dogs and
pop!**



14TH ANNUAL WINTER DEMO DAY

Saturday, December 6 • 10 am to 3pm

Come test out all the latest equipment from all the top manufacturers.

BIGGEST DEMO DAY IN SOUTH KING COUNTY!

Everything 10% off *

• **20% OFF ALL CLUB REGRIPS***

• **FREE PROFESSIONAL DRIVER FITTING**
using Launch Monitor technology - \$50 Value

• Spend \$200 receive a
FREE ROUND OF GOLF - \$38 VALUE

• Spend \$750 receive a
FREE RANGE PASS- \$220 VALUE



**All Apparel
30 off***

**All Bags
20% off***



* Some Restrictions Apply

Callaway Cleveland Titleist Nike Cobra Mizuno PING TaylorMade Wilson

**OFF SEASON
PASSES
AVAILABLE!**

**Play Unlimited
Golf!**

December-March

Regular Pass	\$529
Senior Pass	\$429
Twilight	\$229

**Have you been
asked to plan
your company
event for 2015?**

Look no further than
Riverbend Golf Complex.
Awesome dates still available!!

Check our website for more details.
www.riverbendgolfcomplex.com

DECEMBER 2014

"DOPPLER DEALS"

In an effort to better serve our valued
customers during the fall and winter months
RIVERBEND IS INTRODUCING
"DOPPLER DEALS"

A new way to play in the off season.

Check RIVERBENDGOLFCOMPLEX.COM for details.

Par 3 Golf Course: 253-856-5195 Driving Range: 253-856-5175

A City of Kent Facility | 253-854-3673 | riverbendgolfcomplex.com



Like us on [facebook.com/riverbendgolfcomplex](https://www.facebook.com/riverbendgolfcomplex)



Follow us on Twitter @cityofkent